



Clearwater Basin Collaborative

*finding solutions*

## Clearwater Basin Collaborative Meeting

Kamiah, Idaho

April 21, 2010



# Discussion Topics

- Collaborative Forest Landscape Restoration Program (CFLRP) Overview
- Clearwater Basin Collaborative and Clearwater and Nez Perce National Forests Partnerships
- Selway-Middle Fork Clearwater CFLRP Project Proposal
- Next Steps
- Questions and Discussion

# Collaborative Forest Landscape Restoration Program (CFLRP) Overview



# USFS Nationwide Strategic Goals

- Reduce risks of catastrophic wildland fire
- Reduce the impacts from invasive species
- Provide outdoor recreational opportunities
- Help meet energy resource needs
- Improve watershed conditions
- Conduct mission-related work in addition to that which supports the agency goals

# Collaborative Forest Landscape Restoration Program Overview

An all lands approach to forest restoration that:

- Reduces wildfire management costs by reestablishing natural fire regimes and reducing the risk of uncharacteristic wildfire
- Demonstrates the degree to which restoration techniques achieve ecological and watershed health objectives
- Encourages the use of forest restoration by-products to offset treatment costs, create jobs, benefit local rural economies and improve forest health

# Collaborative Forest Landscape Restoration Program Overview

- Encourages close coordination with other landowners and collaborative solutions to achieve restoration goals
- Promotes ecological, economic and social sustainability
- Leverages local resources with national and private resources

# CFLRP Funding Opportunities

- \$40 million/year from 2010-19
- Two projects per region per year
- Up to 10 projects nationally per year
- Funds can be used on USFS land only
- Funds up to 50% of implementation and monitoring costs (no more than \$4 million per project per year)
- Funds available for 10 years per proposal



# Eligible CFLR Projects Must

- Identify and prioritize restoration treatment on at least 50,000 acres of USFS land for at least 10 years
- Involve active ecosystem restoration in support of the purposes of the FLRA
- Include restoration treatments that will contribute wood products to existing or proposed wood-processing and/or biomass processing infrastructure
- Incorporate the best available science and application tools



# Eligible CFLR Projects Must

- Maximize retention of large trees and fully maintain or contribute to the restoration of pre-suppression old growth conditions
- Modify fire behavior through thinning, fuel break construction and maintenance and fire use
- Be developed and implemented using a collaborative process
- Include multi-party monitoring to ensure effectiveness of restoration activities

# CBC, Clearwater and Nez Perce Forests Partnerships



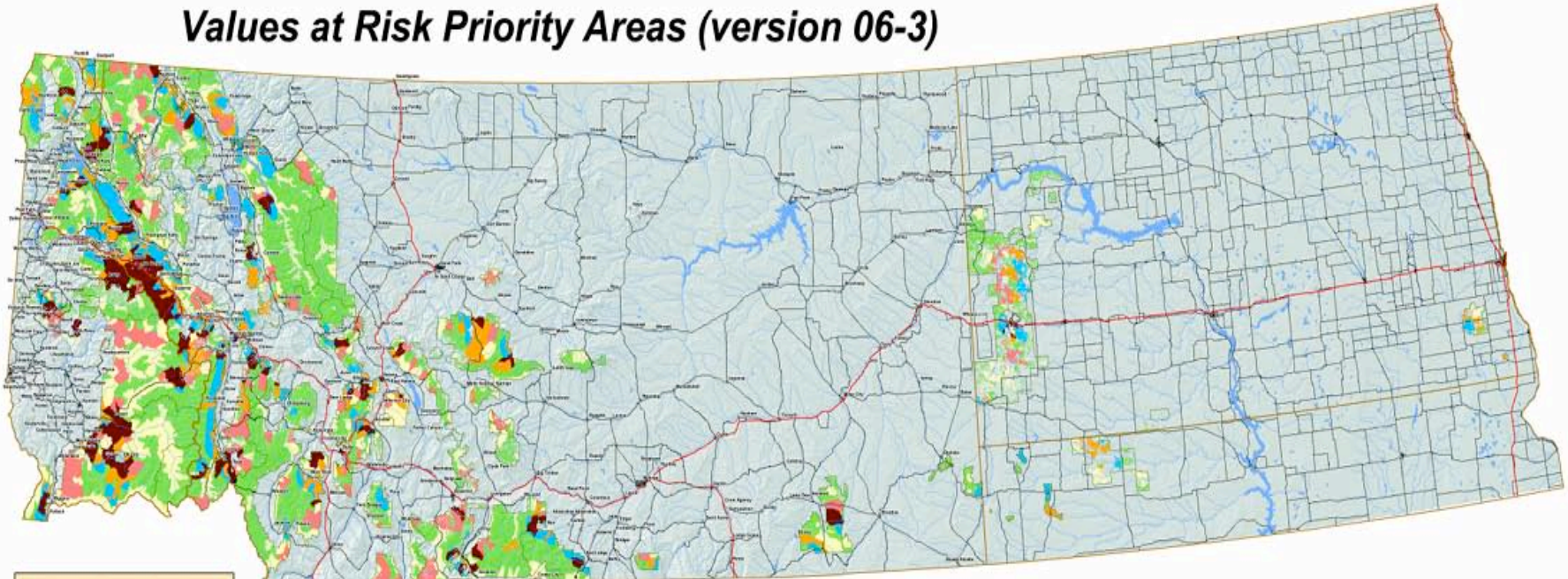
# Selway-Middle Fork Clearwater Project CFLRP Proposal





# Region One Integrated Restoration and Protection Strategy Values at Risk

Values at Risk Priority Areas (version 06-3)



- National Forest System (NFS) Lands
- Natl. Forest/Grassland Admin. Boundary
- State &/or Regional Boundary
- Interstate Highway
- Major Roads
- Rivers

- Restoration and Protection  
Priority Levels
- Priority Level 1
  - Priority Level 2
  - Priority Level 3
  - Priority Level 4
  - Priority Level 5

DATA SOURCES:  
Values at Risk Priority Areas:  
[http://revents.r1.fs.fed.us/ge/RFVAL/Whitahesl\\_priot\\_prior\\_y063.zip](http://revents.r1.fs.fed.us/ge/RFVAL/Whitahesl_priot_prior_y063.zip)  
NFS Lands:  
[http://www.fs.fed.us/r1/igp/thematic\\_data/ownership\\_fm\\_r1\\_127n.htm](http://www.fs.fed.us/r1/igp/thematic_data/ownership_fm_r1_127n.htm)  
State &/or Regional Boundary:  
[http://www.fs.fed.us/r1/igp/thematic\\_data/ra\\_admin\\_boundary\\_region1\\_100k.htm](http://www.fs.fed.us/r1/igp/thematic_data/ra_admin_boundary_region1_100k.htm)  
Interstate Highways: subset of Major Roads  
Major Roads:  
[http://www.fs.fed.us/r1/igp/thematic\\_data/roads\\_major\\_usa\\_100k.htm](http://www.fs.fed.us/r1/igp/thematic_data/roads_major_usa_100k.htm)  
Rivers:  
[http://www.fs.fed.us/r1/igp/thematic\\_data/streams\\_us\\_2in.htm](http://www.fs.fed.us/r1/igp/thematic_data/streams_us_2in.htm)  
Cities:  
[http://www.fs.fed.us/r1/igp/thematic\\_data/cities\\_popplace\\_gmt\\_usa\\_100k.htm](http://www.fs.fed.us/r1/igp/thematic_data/cities_popplace_gmt_usa_100k.htm)

Disclaimer:  
The USDA Forest Service manages resource information and derived data as a service to USDA Forest Service users of digital geographic data. The USDA Forest Service is not responsible for or endorsing the application of this map for any given purpose. It is the sole responsibility of the user to determine whether or not the map is suitable for the intended purpose. It is also the obligation of the user to apply this map in an appropriate and conscientious manner. The USDA Forest Service provides no warranty, nor accepts any liability, resulting from any inexact, incomplete, or misleading use of the map.

**DRAFT - SUBJECT TO CHANGE**  
July 16, 2007

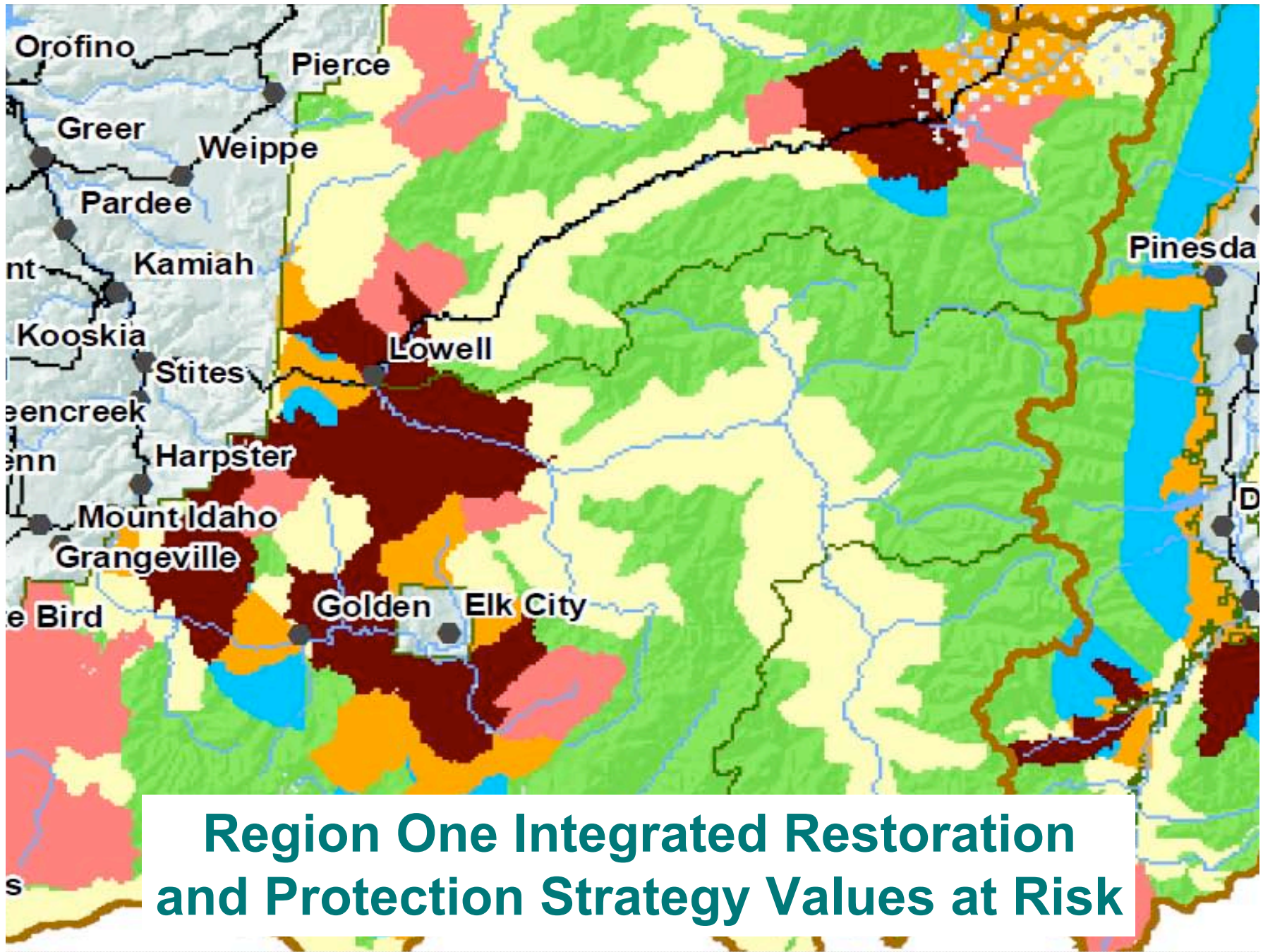


**Restoring and Protecting Fire Adapted Landscapes and Watersheds**  
The Northern Region Integrated Restoration and Protection Strategy

View this map and learn more about the strategy at  
<http://www.fs.fed.us/r1/projects/int-restoration/index.shtml>



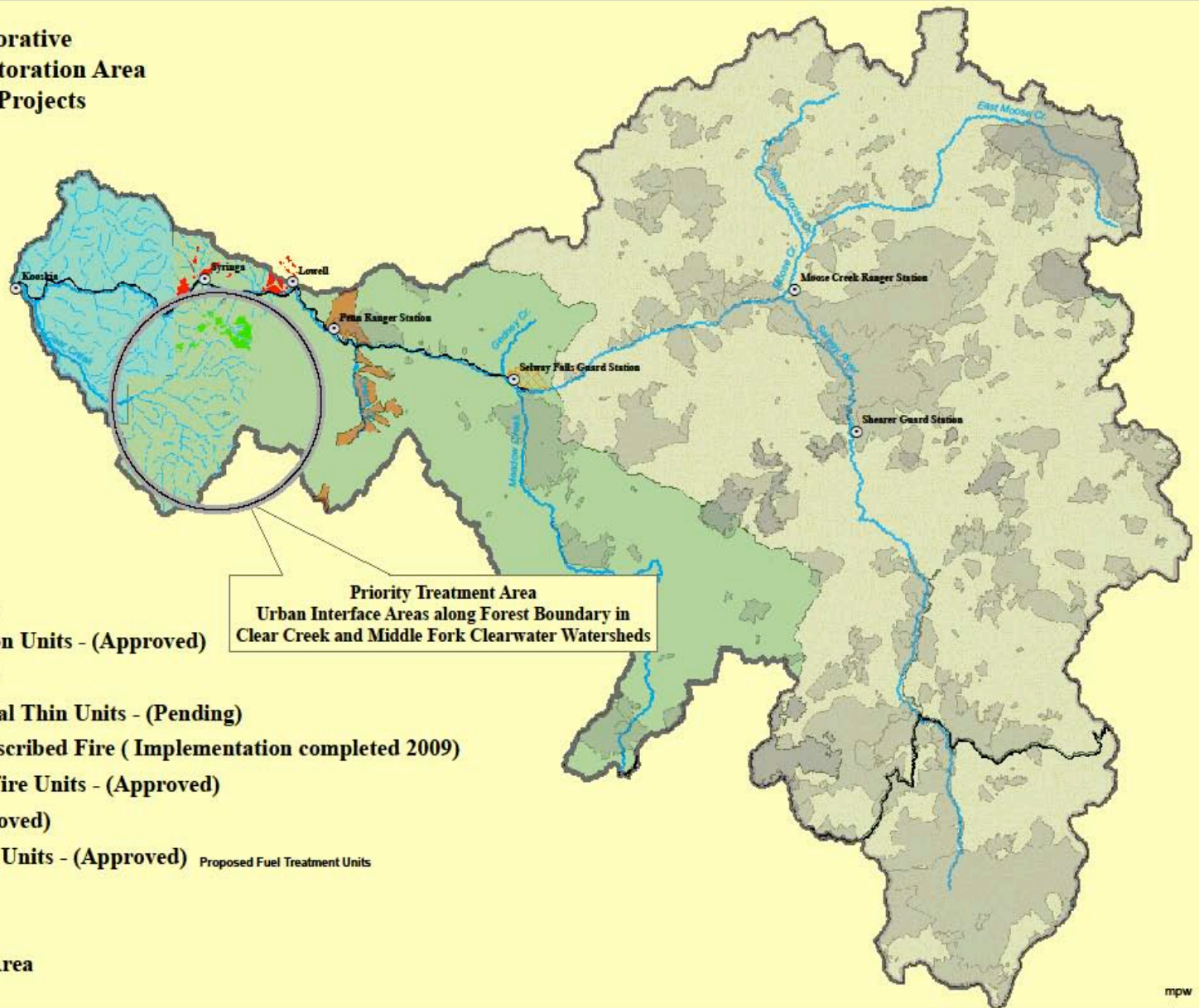






# Selway-Middle Fork Restoration Area

Clearwater Basin Collaborative  
 Proposed Landscape Restoration Area  
 Approved and Proposed Projects  
 Fire History 1960-2009  
 03/25/2010



## Legend

- Towns and Landmarks
- Interface Fuel Reduction Units - (Approved)
- Fire History 1960\_2009
- Lodge Point Commercial Thin Units - (Pending)
- Selway Falls Cabin Prescribed Fire ( Implementation completed 2009)
- Fenn Face Prescribed Fire Units - (Approved)
- SBW Weeds EIS (Approved)
- OHara Prescribed Fire Units - (Approved) Proposed Fuel Treatment Units
- Private Ownership
- Wilderness Portion
- Proposed Restoration Area

Priority Treatment Area  
 Urban Interface Areas along Forest Boundary in  
 Clear Creek and Middle Fork Clearwater Watersheds

# 1. Proposed Treatment - Goals

- **Protect rural communities**, private land and Wild and Scenic River values from large wildland fire
- **Restore/maintain a resilient landscape** (wildfire, invasive species, insects, disease and climate change)
- **Restore/maintain** forest structure, function and ecologic processes that promote **aquatic health** and native species habitat for Bull Trout, Steelhead and Westslope Cutthroat Trout
- **Restore/maintain** forest structure, function and ecologic processes that **promote habitat for native terrestrial species** including mule deer, elk and other big game
- **Eliminate or contain noxious weeds** to the extent possible
- **Promote landscape conditions that allow fire** to function as the primary ecosystem restoration agent within the Middle and Upper Selway River watersheds
- Include restoration treatments that will **contribute wood products** to existing or proposed wood-processing and/or biomass processing infrastructure, **create jobs** and help **sustain rural communities**



# 1. Proposed Treatment - Objectives

- **Reduce ladder fuels** in to minimize the risk of high severity fire (focus on WUI)
- Reduce stand densities and create variable aged stands across the landscape to improve forest resilience to insects and disease, reduce fire severity and firefighting costs
- **Allow natural fire** on the landscape **where risks** to watershed health and human lives and property **can be minimized**
- **Create openings to provide forage for elk and mule deer. Maintain older stands for thermal cover and security habitat**
- **Improve road drainage** and surface features and **decommission** problem or unnecessary roads. Replace culverts and **improve aquatic species passage to improve stream habitat.**
- **Treat noxious weeds** to allow native vegetation to return
- Restoration treatments will **create jobs** and provide opportunities to diversify and promote emerging technology (e.g. biomass plants) and other **economic opportunities for local communities**

## 2. Ecological Context

- Landscapes within the proposal area include priority areas for both terrestrial and aquatic restoration. The Forest's analysis and recommendations are well articulated in the Selway and Middle Fork Clearwater Rivers Subbasin Assessment
  - *“Restoration, even in wilderness areas, will be required to recover the array of communities, habitats and species that the assessment area”*
- The findings and recommendations are also consistent with priorities outlined in the Region One Integrated Restoration and Protection Strategy

## 2. Ecological Context

- Across the Subbasin, there has been a change in landscape condition, due to fire suppression, introduction of invasive species and uncharacteristic harvest patterns
  - homogenous stands
  - loss of variability/resilience to insects, disease, large fires and climate change
  - loss of habitat
- Road construction, timber harvest, grazing, mining and private development in some watersheds have disrupted aquatic processes. These impacts have often been associated with some of the most productive low-gradient habitats
  - loss of connectivity and strength of aquatic populations

## 4. Wildfire

- Highest **priority areas for fuel treatment** are **urban interface** areas surrounding Clearwater, Lowell and Kooskia
  - Idaho County Wildfire Protection Plan has identified extensive development of private lands adjacent to Forest Boundary
- Planned and proposed **treatments would reduce fire behavior** and the **risk of fire spread into private lands** and communities
- **Fuel reduction treatments** surrounding the WUI **would also complement ongoing efforts** to reestablish and **maintain natural fire regimes** across other (non WUI) areas
  - Restoration of natural fire regimes by allowing management of natural fire where appropriate. Need to transition fuels with mechanical harvest and prescribed fire.

## 5. Utilization

- **Wood processing infrastructure exists in close proximity** to the treatment areas
- **Wood products will provide significant revenue** to pay for stewardship contracts for fuels reduction, road improvement as well as implementation of all restoration and monitoring activities
- **Commercial thinning** from historical harvest areas and older fire originated stands to promote resiliency, fuels reduction and stand vigor is planned
- **Regeneration harvest** is also planned **at an appropriate scale** to mimic stand replacing fire activity. This would also aid in wildfire control and reduced fire suppression costs
- Activities will present a **readily available source of biomass** that will be made available to existing and future biomass energy facilities

## 6. Investments

- What federal investments are anticipated within the landscape?
- What non-federal investments are anticipated within the landscape?
- What non-federal investments are anticipated outside of the landscape that may affect the successful restoration of the landscape?
- Is restoration capacity increased, and if so how?
- Will future restoration unit costs decrease?
- Will jobs be created? If so, what kind, how many, and for how long?
- Will employment or training opportunities be provided for local private, nonprofit, and/or cooperative entities?
- Will local employment or training opportunities be provided for youth groups?
- Will local employment or training opportunities be provided for existing or proposed small businesses?

# 6. Investments (continued)

TREAT 4-9-10\_Example.xls [Compatibility Mode] - Microsoft Excel

Home Insert Page Layout Formulas Data Review View Developer

Clipboard Font Alignment Number Styles Cells Editing

B54

1  
2  
3  
4  
5 Region 1  
6 TREAT Project Impacts for: **Sample Project**  
7 SUMMARY TABLES: Average Annual Impacts  
8  
9  
10

	Employment (# Part and Full-time Jobs)	Labor Inc (2009 \$)
Commercial Forest Products	129.8	\$5,148,493
Other Project Activities	41.4	\$1,490,072
FS Implementation and Monitoring	23.7	\$999,837
<b>Total Project Impacts</b>	<b>194.9</b>	<b>\$7,638,402</b>

**\*These are hypothetical results**

**Note**  
Employment is full, part-time, and temporary jobs (direct and secondary). Labor Income is the value of wages and benefits plus Proprietor's Income (direct and secondary)

Other Project Activities (ecosystem restoration, etc.) are labor intensive and therefore will produce higher employment impacts relative to commercial harvest activities which are highly mechanized and are not as labor intensive.

**Impacts-Jobs and Income**  
The economic impacts of the restoration strategy are reported in this worksheet. No data entry is required, and the summary table may be cut a

Ready



# 7. Funding Estimate

*(Copy table and provide the planned funding for each additional fiscal year).* Funds to be used on NFS lands for ecological restoration treatments and monitoring that would be available in FY 20xx to match funding from the Collaborative Forested Landscape Restoration Fund

Fiscal Year 20xx Funding Type	Dollars/Value Planned
FY 20xx Funding for Implementation	
FY 20xx Funding for Monitoring	
1. USFS Appropriated Funds	
2. USFS Permanent & Trust Funds	
3. Partnership Funds	
4. Partnership In -Kind Services Value	
5. Estimated Forest Product Value	
6. Other (specify)	
FY 20xx Total ( total of 1 -6 above for matching CFLRP request)	
FY 20xx CFLRP request (must be equal to or less than above total)	
Funding off NFS lands associated with proposal in FY 2010 (does not count toward funding match from the Collaborative Forested Landscape Restoration Fund)	
Fiscal Year 20xx Funding Type	Dollars Planned
USDI BLM Funds	
USDI (other) Funds	
Other Public Funding	
Private Funding	

## 8. Regional Forester's Funding Plan

- The Forests are developing an ambitious 10 year program of work. Funding provided by the CFLRP will provide increased capacity to accomplish restoration work within the Selway and Middle Fork Subbasins.
- The Regional Forester will assign staff to develop the plan required by the call letter;
  - Use regional funding for planning, implementation and monitoring of ecological restoration treatments on NFS lands consistent with the strategy.
  - Funds used for implementation and monitoring can be used to match CFLRP requests. Assurance is needed that CFLRP funds allocated in FY 2010-11 would be spent on ecological restoration treatments the same fiscal year they are transferred.
  - Multiparty monitoring will be funded to assess ecological, social and economic effects for at least 15 years after project implementation.

## Next Steps

- CBC support and endorsement of proposal
- Gather letters of support for project
- Finalize and submit proposal to Regional Office by May 3
- Present to Regional Forester on May 10
- Region submits final proposal to National Office by May 14
- Possible presentation to National CFLRP RAC
- Pending selection, develop Work Plan (180 days to complete)